

Ovolo Hotel, Woolloomooloo

Case Study

www.alland.com.au



Ovolo Hotel, Woolloomooloo **Revolutionary Luminance**

Finger Wharf Woolloomooloo is the longest timbered-piled wharf in the world and was completed in 1915. Today it has been redeveloped as a fashionable complex housing the Ovolo Hotel, restaurants and residential apartments.

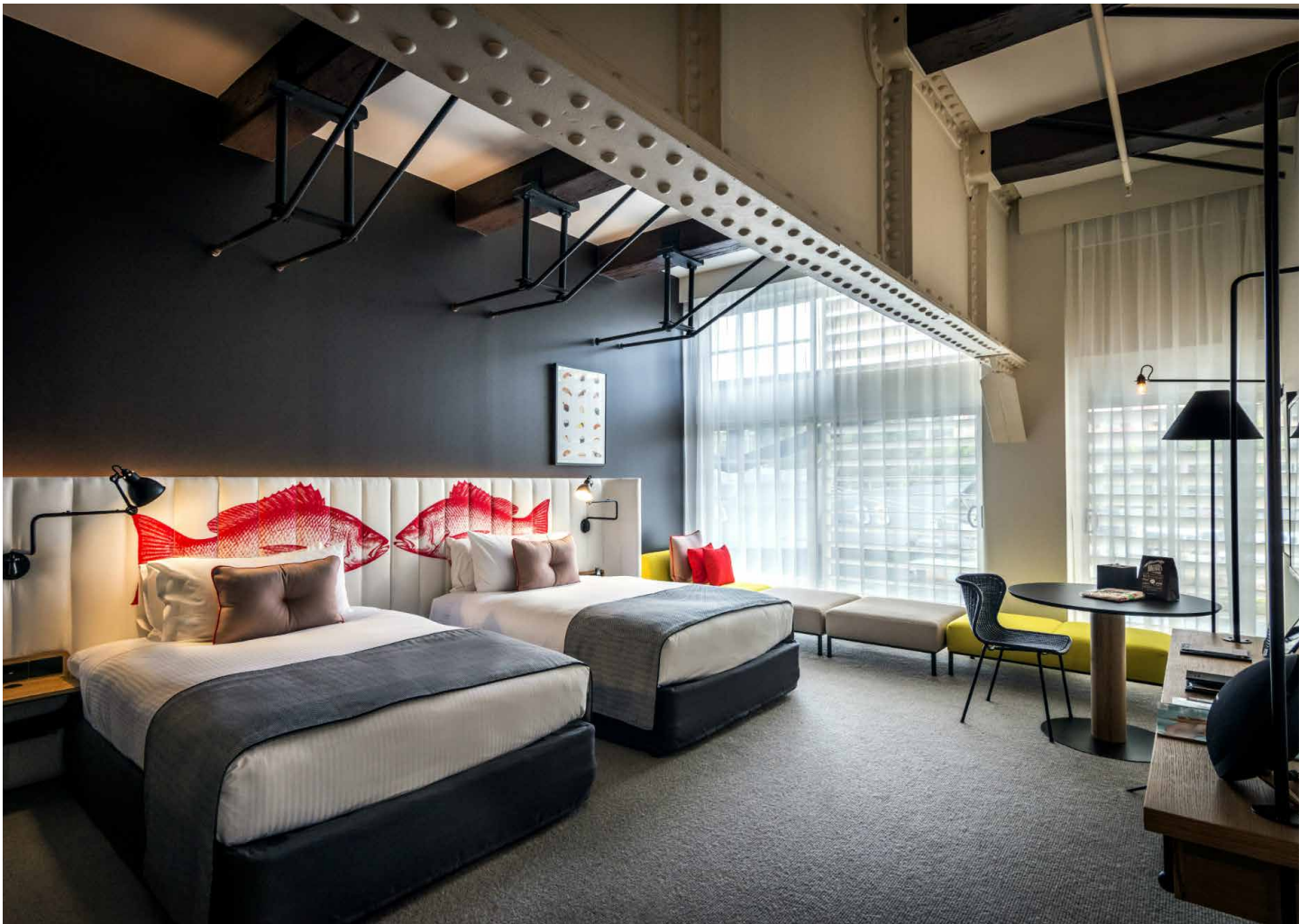
The newly refurbished Ovolo Hotel in the 100-year old Finger Wharf at Woolloomooloo, capitalizes on the brilliant harbourside setting and cosmopolitan surrounds transforming the historic wharf into a place that guests can truly appreciate.

Alland Group are immensely proud of our association with Shape Group Australia and the work completed at Ovolo. The project scope included all public and commercial areas,

conference rooms, function space, pool area, gymnasium, bar, lounge and the 100 guest rooms.

Alland Group was instrumental in updating the heritage building to 21st century technology incorporating LED Lighting, Lighting Control, power reticulation, switchboard upgrades, surge protection, specialist lighting, CCTV – Video surveillance, monitored emergency and exit lighting.

Hotel spaces are divided into small zones and intimate pavilions using the heritage buildings considerable structural elegance to advantage. Pockets of sunlight and tree-filled spaces within the pavilions encourage a variety of uses enticing people to visit and linger.



Buzzy bars, restaurants and retail options are great for local residents and hotel guests alike. Inside, the elegant public spaces and fresh colour scheme contrast with the atmospheric guest rooms. The guest rooms are truly unique, boasting generous in-room inclusions, custom lighting and locally commissioned artworks.

The most striking transformation is in the cavernous lobby, which has become a tree-lined lane way of lounges, bars and dining areas – a kind of grown-up playground, with three retro video-game tables, featuring Space Invaders and a Pool Room.

Project Details

Location Finger Wharf

Cowper Road, Woolloomooloo, NSW Australia

Building Type Luxury Hotel

Client Ovolo Hotel

Builder Shape Group Australia

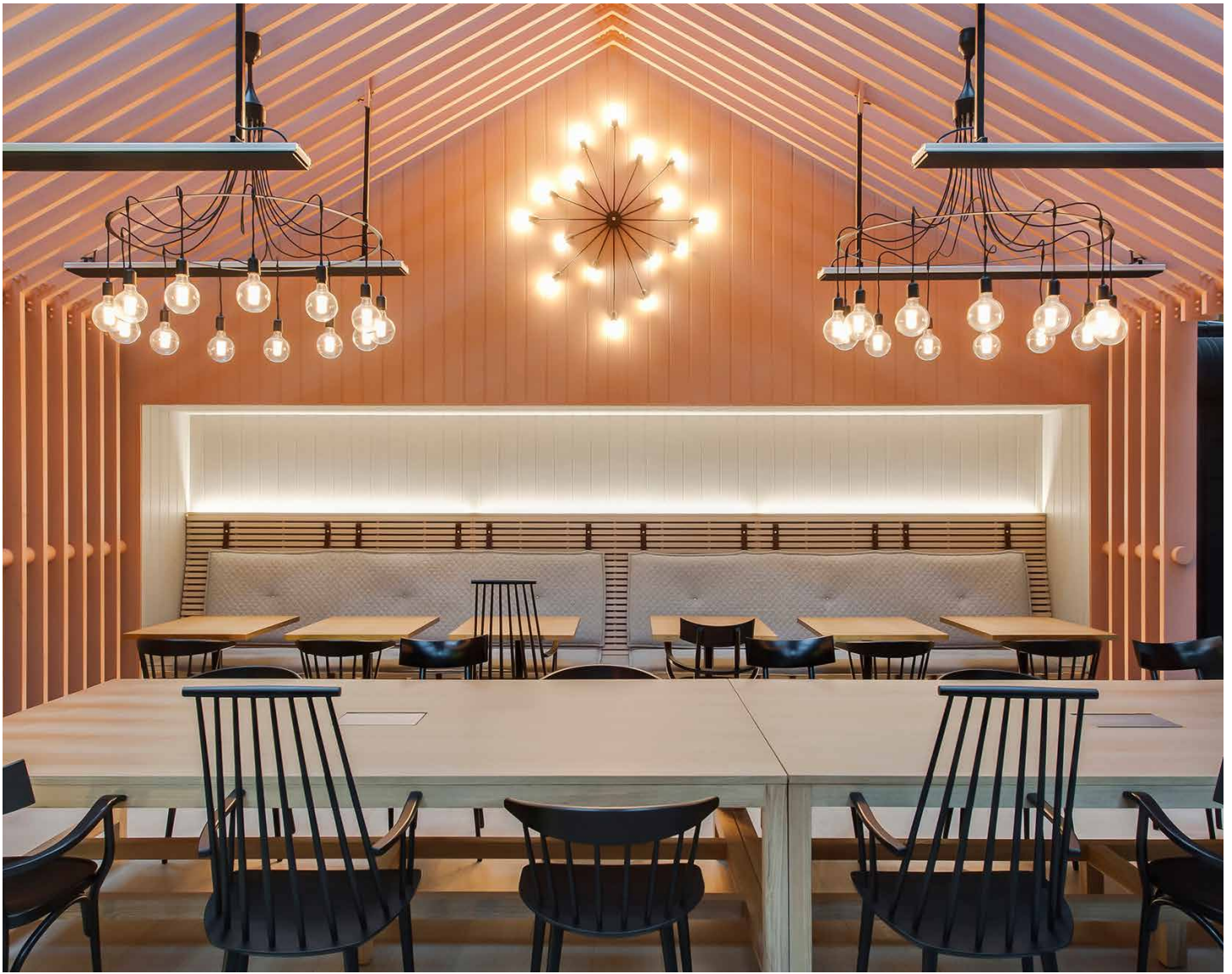
Lighting Control System Within

The lighting control system utilises a Clipsal C-Bus microprocessor based control system incorporating relay and DA LI modules, touch screens, switches, sensors and interfaces to automatically control various forms of lighting and blinds throughout the project. The C-Bus control equipment is installed within custom built DIN-rail enclosures adjacent to the associated distribution boards.

Power and Lighting Reticulation

In line with the re-purposing of the building into a state of the art function venue, a significant upgrade of the building's power and lighting reticulation was undertaken. These circuits are able to safely accommodate the new LED lighting and control systems, as well as the general power requirements.

Considering the amount of audio-visual and high-end lighting control equipment used in this project it was paramount that appropriate levels of surge protection were included in the design.



Switchboard Upgrades / New

The inclusion of the C-Bus lighting controls and upgraded power requirements meant that the switchboards required upgrading to house all of the new equipment. This also included the design, sourcing and installation of new switchboards.

Communications

The building now has a Cat6 structured cabling system to support the audio-visual requirements, wireless internet and office networks.

Energy Efficiency

A significant part of the design process centred on ensuring that the whole installation was as energy efficient as possible. Alland Group have put their many years of knowledge and experience gained on working on commercial properties

within the Sydney CBD to use to deliver a project that reduces running costs and the carbon footprint of the building through technologies such as LED Lighting and smart lighting control.

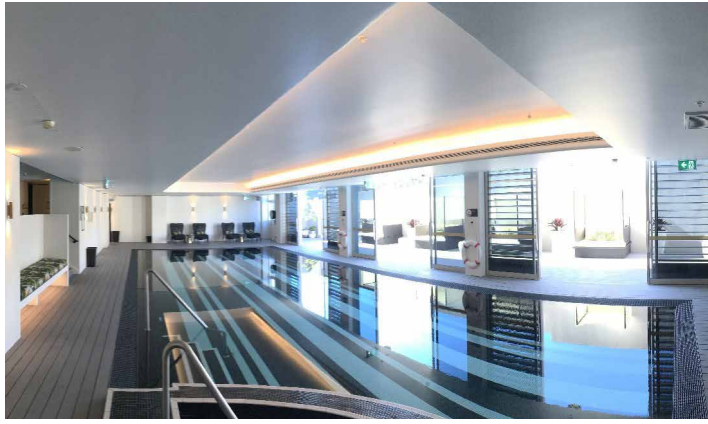
Emergency Lighting

This project utilised a computer based monitored system known as “Zoneworks” which is a real-time, automatic monitoring and testing facility for Emergency Luminaires and directional Sound Escape™ devices.

The ZWORKS System comprises Emergency & Exit Lighting with real time monitoring capability. Devices are connected to a data network via the “mains” cabling and data cable structured cabling. A PC server is connected to the networks to provide real time reporting which is also available to test and monitor remotely.



The Pool Before



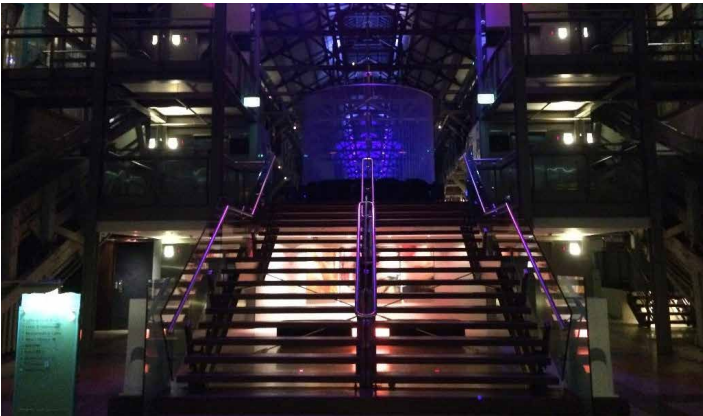
The Pool After



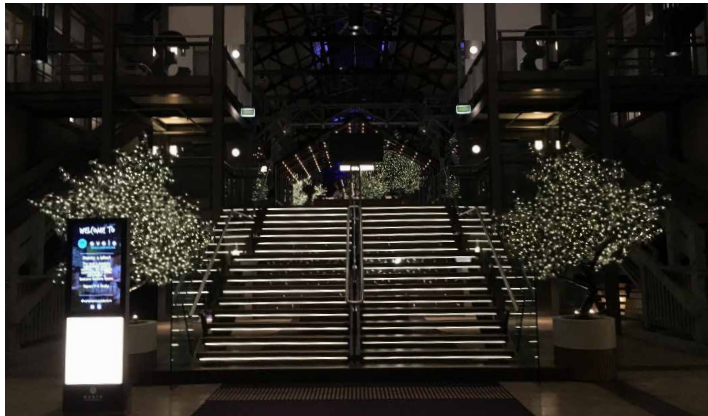
The Pool Outside Area Before



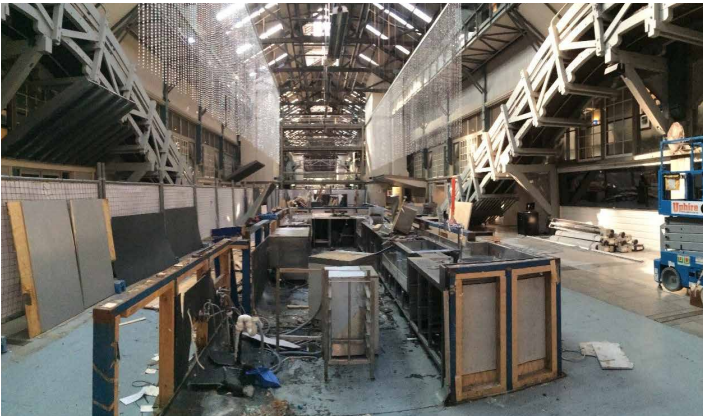
The Pool Outside Area After



The Foyer Before



The Foyer After



The Reception Before



The Reception After





Testimonial

Shape Australia Pty Limited

"Shape Group is Australia's leading commercial fit-out and refurbishment specialists delivering large scale projects Australia wide.

We are particularly proud of the Ovolo Hotel project and rely on our partners to bring leadership and commitment and bring the jobs in on time and budget.

To this end we cannot praise Alland Group enough. With superior skill set and a great work ethic, Alland Group is the go to company for the electrical work on our high end projects.

I can attest that Alland Group have a solutions orientated can-do outlook that is second to none. They have on a consistent basis shown that their service, quality of work & professionalism to be outstanding.

Shape Group needs to ensure that any electrical supplier we use have a strong technical ability along with being well regarded in the industry. Alland Group have an excellent reputation and we have found them to be extremely reliable and able to meet all our electrical and data needs."

Naim El-Kaderi

Senior Project Manager



About Alland Group

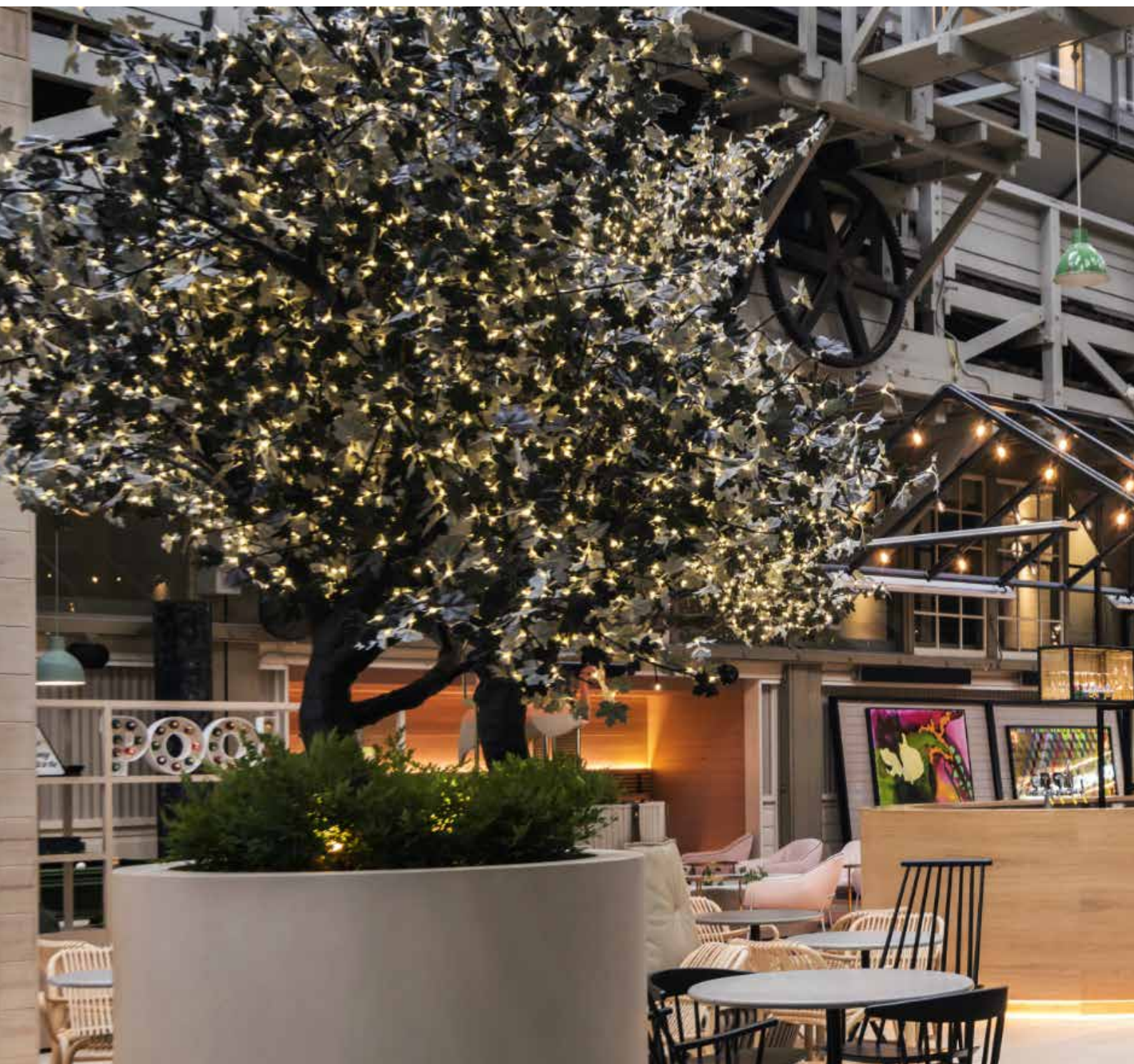
Alland Group Pty Ltd is an Australian owned company, with years of experience in the electrical industry.

We are a highly professional and dynamic business with a proven track record of effectively delivering diverse projects to a broad range of customers.

We specialise project management, innovative electrical communication, data solutions, installation and maintenance.

Alland Group's mission is to offer its customers the highest quality electrical services with a focus on:

- Specialising in service maintenance to new and existing sites, whilst providing compliant and safe working environment
- Expertise in data, communication and electrical installation
- Designing system energy efficiency solutions
- Personalised, expedient and convenient electrical services
- Growing and maintaining a referral network of customers
- Rapid order and delivery of electrical components
- Values — safety, reliability and responsiveness



ABN 99 151 748 088
Licence No. 239595C

T 1300 255 263 | Unit 20, 56–58 O’Riordan Street, Alexandria

Copyright © 2017 Alland Group Pty Ltd.
All rights reserved.